

4137 Whitney 2D,E,F

Offered at \$4,500

- Business Opportunity, Office, Retail
- 2,673 Total SqFt
- Present Use: Jewelry Store



Main Entry



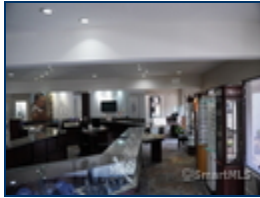
Main Entry + Second Entry



Second Entry



First View Upon Entering



New prime office/retail location off of Whitney Ave (Route 10). This location provides 2,673 square feet of space to accommodate your business desires as the possibilities for build out are endless. Commercial plaza recently underwent remodeling of parking lot, painting, landscaping, and lighting. This location boasts high visibility and easy access to Whitney Ave with close proximity to Quinnipiac University, Sleeping Giant State Park, and local Hamden and Cheshire Residents. This space is located at center of plaza and grabs all the attention for shoppers and visitors entering. This space also comes included with security shutters at rear entry to keep all your equipment safe and sound. Dont miss out on this opportunity to elevate your business to the next level.

Contact agent to schedule a showing of this space!

Listing agent is related to landlord.

Abdullah F. Farid

Ras Realty Group, LLC

15 Bluefield Court

Cheshire, CT 06706

Direct:(203) 706-0229

Afarid@RasRealtyGroup.Com

Ras Realty Group, LLC

List office: Ras Realty Group, LLC (203) 706-2980

All measurements and figures are approximate. Source of information is deemed reliable, but not verified.

